

APPLICABLE BUILDING CODES

1. THIS BUILDING SHALL MEET THE REQUIREMENTS OF THE FOLLOWING CODES:

- INTERNATIONAL BUILDING CODE OF 2018
- INTERNATIONAL FIRE CODE OF 2018
- INTERNATIONAL PROPERTY MAINTENANCE CODE OF 2018
- INTERNATIONAL ENERGY CONSERVATION CODE OF 2018
- INTERNATIONAL PLUMBING CODE OF 2018
- INTERNATIONAL MECHANICAL CODE OF 2018
- NATIONAL ELECTRIC CODE OF 2018
- ICC/ANSI A117.1 - 2017

IBC 2018 JOB NOTES

PROJECT SUMMARY: THE PROJECT IS AN ALTERATION OF AN EXISTING F-1/S-1 BUILDING FOR USE AS A MOTOR VEHICLE REPAIR GARAGE.

1. **USE GROUP CLASS** (F-1) - MODERATE INDUSTRIAL
(S-1) - MODERATE STORAGE
(B) - BUSINESS
2. **CONSTRUCTION CLASS** TYPE 2B (602.2) [NON-COMBUSTIBLE, UNPROTECTED]
3. **FIRE SUPPRESSION** EXISTING BUILDING SHALL BE EQUIPPED WITH SPRINKLER SYSTEM.
PORTABLE FIRE EXTINGUISHERS ARE REQUIRED (906.1)
4. **BUILDING LIMITATIONS** ALLOWABLE: (F-1) (15,500 S.F.) - 3 STORIES (TABLE 504.4), 506.2)
EXISTING BUILDING AREA: 27,579 S.F.
PROPOSED ADDITION AREA: 1984 S.F.
TOTAL: 29,563 S.F.
UNLIMITED BUILDING AREA PERMITTED (507.4)
5. **OCCUPANT LOAD ALLOWABLE** 2431 (GROSS) / 100 = 25 occ. (TABLE 1004.1.2) BUSINESS (B)
7820 (GROSS) / 100 = 79 occ. (TABLE 1004.1.2) INDUSTRIAL (F-1)
6884 (GROSS) / 300 = 23 occ. (TABLE 1004.1.2) STORAGE (S-1)
TOTAL = 127 OCCUPANTS
6. **EGRESS REQUIREMENTS** (0.2 IN.) (127 occ.) = 26 INCHES MINIMUM (1005.1)
170 INCHES PROVIDED
7. **TRAVEL DISTANCE** F-1/S-1 USE = 250' MAX. (TABLE 1017.2)
8. **REMOVEDNESS OF EXITS** 243/3 = 81 FT. MIN. VS. 100 FT. ACTUAL PROVIDED (1007.1.1)
9. **PLUMBING FIXTURES**

	(TABLE 2902.1) WATER CLOSETS	(TABLE 2902.1) LAVATORIES	(TABLE 2902.1) DRINKING FOUNTAINS	(TABLE 2902.1) SERVICE SINK
(B) CRITERIA	(1) PER 25 FOR 1ST 50 (1) PER 50 AFTER	(1) PER 40 FOR 1ST 80 (1) PER 80 AFTER	(1) PER 100	(1)
(B) REQUIRED	(.52)M, (.52)W	(.33)M, (.33)W	(.25)	(1)
(F-1/S-1) CRITERIA	(1) PER 100	(1) PER 100	(1) PER 400	(1)
(F-1/S-1) REQUIRED	(.51)M, (.51)W	(.51)M, (.51)W	(.13)	(1)
TOTAL REQUIRED	(1.03)M, (1.03)W	(.84)M, (.84)W	(.38)	(1)
TOTAL PROVIDED	(2) M, 2 URINALS (2) W (1) UNISEX	(3) M (2) W (1) UNISEX	(1) WATER FOUNTAIN	(1)
10. **CONCEALED SPACES** DRAFTSTOPPING NOT REQUIRED IN NON-COMBUSTIBLE CONS.
FIREBLOCKING (718.2)
CONCEALED WALL SPACES (718.2.2)
DRAFTSTOPPING FLOORS (718.3)
DRAFTSTOPPING ATTICS (718.4)
11. **EMERGENCY LIGHTING** REQUIRED (1008.1)-SEE ELECTRICAL PLANS
12. **FIRE RESISTANCE** NO PERIMETER WALL FIRE RATING REQUIRED WHERE FIRE SEPARATION DISTANCE GREATER THAN 30 FT. (TABLE 602)

APPLICABLE BUILDING CODES

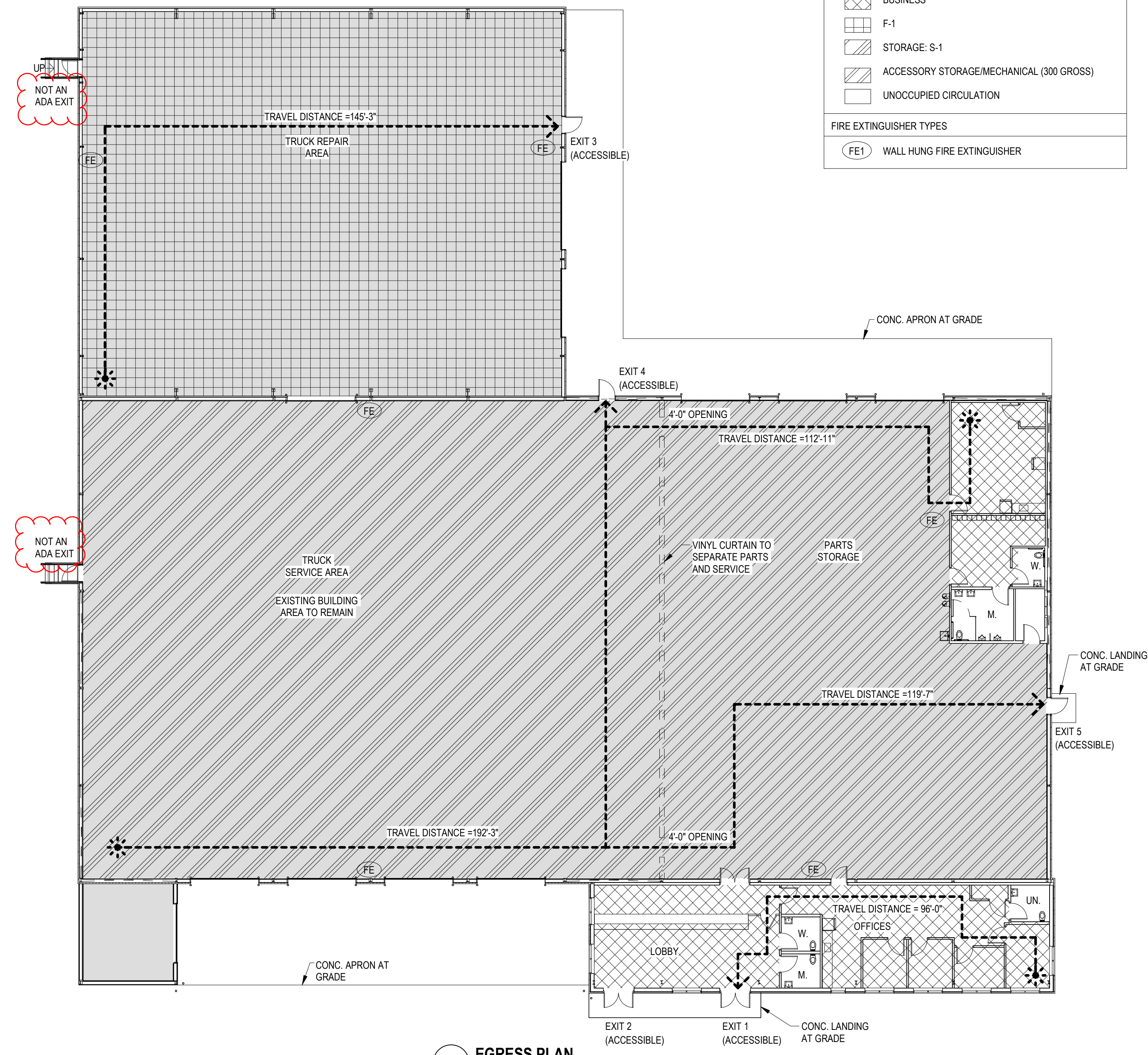
1. THIS BUILDING SHALL MEET THE REQUIREMENTS OF THE FOLLOWING CODES:
- NJ BUILDING SUBCODE (NJAC 5:23-3.14)
 - INTERNATIONAL BUILDING CODE OF 2018
 - INTERNATIONAL FIRE CODE OF 2018
 - ASHRAE 90.1-2016
 - INTERNATIONAL PLUMBING CODE OF 2018
 - INTERNATIONAL MECHANICAL CODE OF 2018
 - NATIONAL ELECTRIC CODE OF 2017 (NFPA 70)
 - ICC/ANSI A117.1 - 2009

LIFE SAFETY LEGEND

OCCUPANCY	OCCUPANT LOAD FACTOR
	BUSINESS
	F-1
	STORAGE: S-1
	ACCESSORY STORAGE/MECHANICAL (300 GROSS)
	UNOCCUPIED CIRCULATION

FIRE EXTINGUISHER TYPES

WALL HUNG FIRE EXTINGUISHER



2 EGRESS PLAN
SCALE: 1/16" = 1'-0"

#	ISSUED FOR:	DATE
1	PRICING	2021-09-10
2	DEAD PERMIT	2021-09-10
3	PERMIT	2021-09-17
4	REVISED TEXT	2023-09-17

STATE OF NEW JERSEY
RYAN D. FENNELLS
18114
REGISTERED ARCHITECT
RYAN D. FENNELLS, AIA
NJ LIC. NO. 24GE049448200

THESE DRAWINGS AND SPECIFICATIONS ARE EXCLUSIVELY OWNED BY SCHLOSSER STEEL BUILDINGS, INC. AND...
SCHLOSSER STEEL BUILDINGS, INC.
O: 478.722.9888 WWW.SSBUILDINGS.COM

BUILDING REHAB FOR:
UNITED BRAKES & CLUTCHES
2039 US-130
ROEBLING, NJ

ISSUED FOR:
PERMIT
2021-09-17

JOB NO. B8761

SHEET TITLE:
CODE SHEET

DRAWING NO.
A011